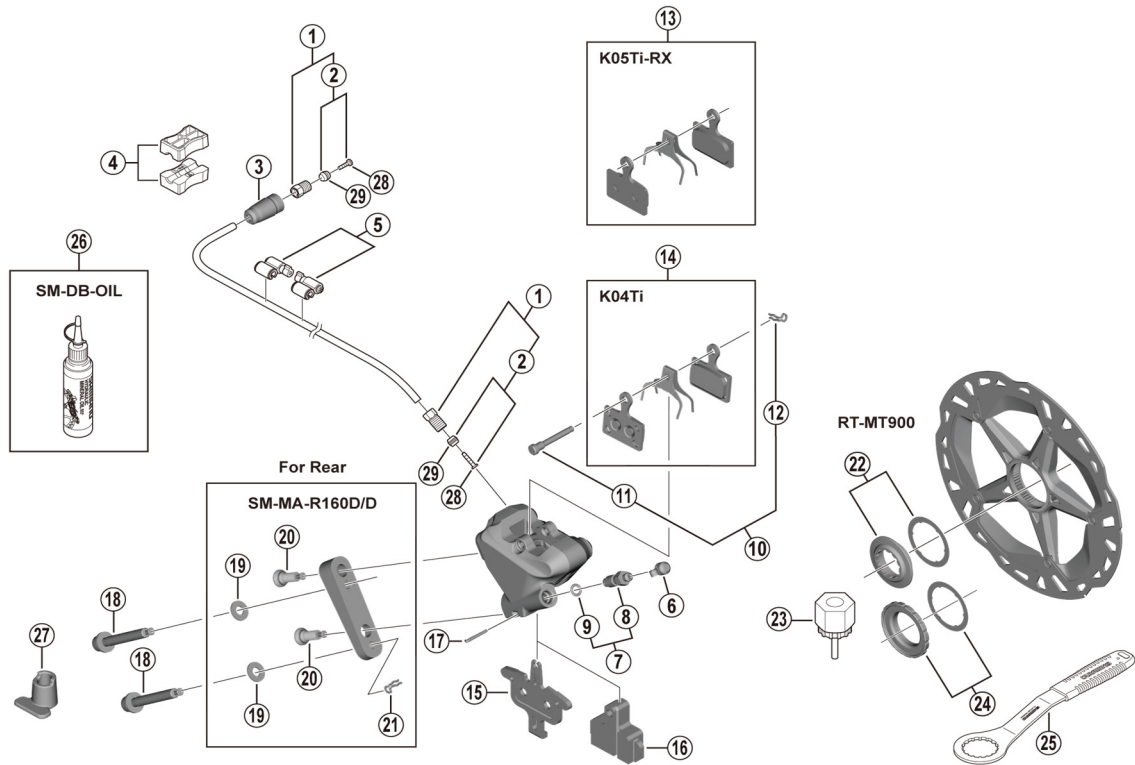


XTR Disc Brake
BR-M9110 Brake Caliper
RT-MT900 Disc Rotor

SM-BH90-SS Brake Hose



ITEM NO.	SHIMANO CODE NO.	DESCRIPTION
1	Y8JA98010	Flare nut unit
2	Y8JA98020	Olive and connector insert
3	Y1XJ16000	Cover
4	Y8H198030	TL-BH61 Shimano original tool (2 pcs.)
5	Y83098040	SM-HANG Hose supporter A and B
6	Y8B214000	Bleed nipple cap
7	Y8CL98050	Bleed nipple and seal ring
8	Y8CL24200	Bleed nipple
9	Y8B511001	O-ring for bleed nipple
10	Y8J798060	Pad axle and snap retainer
11	Y8J710000	Pad axle
12	Y8J716000	Snap retainer
*	IBPK05TIRXA Y8PU98050	K05Ti-RX Resin pad and spring (pair)
*	IBPK04TIMXA Y8PU98020	K04Ti Metal pad and spring (pair)
15	Y8N218000	Pad spacer
16	Y8N219000	Bleeding spacer
17	Y8N207000	Screw fixing pin
18	Y8PU08010	Caliper fixing screw C for 20 mm rear mount thickness
	Y8PU08020	Caliper fixing screw C for 25 mm rear mount thickness
	Y8PU08030	Caliper fixing screw C for 30 mm rear mount thickness
19	Y8NU02000	Washer for R160 adapter
20	Y8N206000	Caliper fixing screw B
21	Y8NU03000	Snap retainer
22	Y8K198010	Lock ring and washer
23	Y12009230	TL-LR15 Lock ring removal tool
24	Y26L98030	Lock ring and washer (externally serrated type)
25	Y13098000	TL-FC36 Lock ring removal tool
26	Y83998020	Mineral oil (100 ml)
	Y83998030	Mineral oil (500 ml)
27	Y8N221000	Screw length selector
28	Y8JA98026	Connecting insert (100 pcs.)
29	Y8H298047	Olive (100 pcs.)

Jul.-2022-4741B
 © Shimano Inc. I

Specifications are subject to change without notice.

SHIMANO